

RatioMatic Burners

Model RM100 Version 3.00

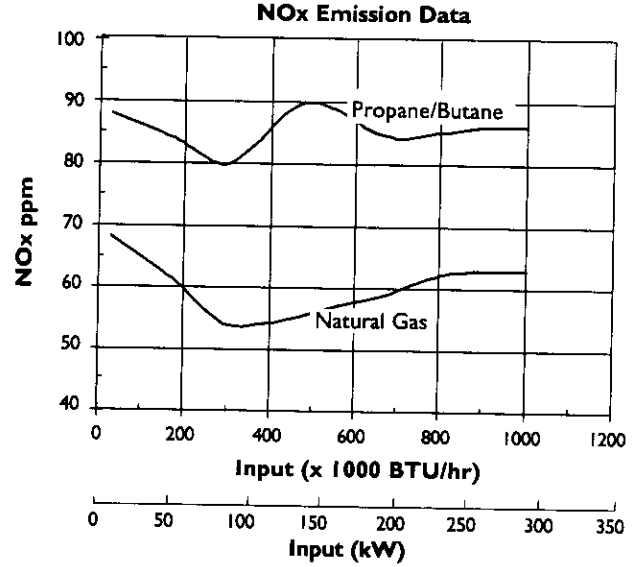
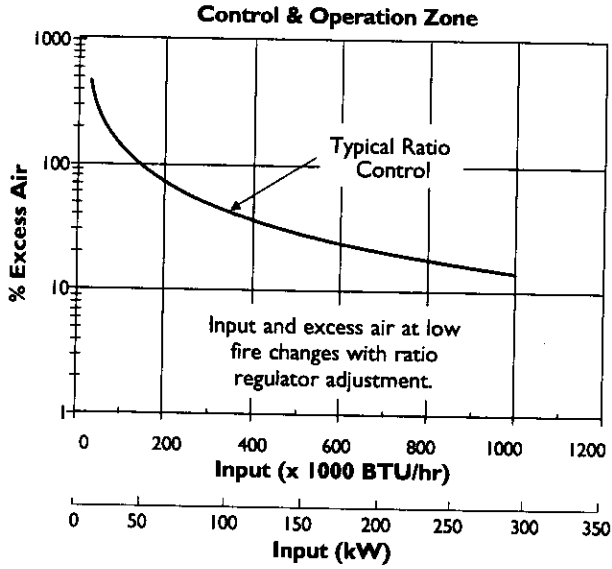
Main Specifications - RM100

PARAMETER		SPECIFICATIONS			
		English		Metric	
		Capacity @ Chamber Pressure			
		BTU/hr	@ "w.c.	kW	@ mbar
Maximum input	60 Hz packaged blower	1,280,000	-5.0	375	-12,4
		1,170,000	-3.0	343	-7,5
		1,000,000	0.0	293	0,0
		930,000	1.0	272	2,5
		860,000	2.0	252	5,0
	50 Hz packaged blower	1,280,000	-5.0	375	-12,4
		1,190,000	-3.0	349	-7,5
		1,020,000	0.0	299	0,0
		960,000	1.0	281	2,5
		890,000	2.0	261	5,0
Note: Contact factory for varying chamber pressures or pressures outside the range: -5.0 to 2.0" w.c. (-12,4 to 5,0 mbar)					
Minimum input	with high turndown ratio regulator	BTU/hr		kW	
	with standard ratio regulator	30,000		9	
		40,000		12	
Main gas inlet pressure • fuel pressure at ratio regulator inlet		10 to 20 "w.c.		25 to 50 mbar	
High fire flame length • measured from the outlet end of the combustor		40 in		1020 mm	
Maximum chamber temperature	Alloy tube	°F		°C	
	SiC tube	1500		815	
		1900		1038	
Flame detection		Flame rod or UV scanner			
Fuel		Natural Gas, Propane or Butane. For any other mixed gas, contact Eclipse Combustion for orifice sizing			

- All information is based on laboratory testing. Different chamber size and conditions will affect the data.
- Maximum inputs are given for the standard combustion air blower without an air filter.
- All inputs based upon gross calorific values and standard conditions; 1 atmosphere, 70° F (21°C).
- Eclipse reserves the right to change the construction and/or configuration of our products at any time without being obliged to adjust earlier supplies accordingly.

Performance Graphs

RatioMatic RM100



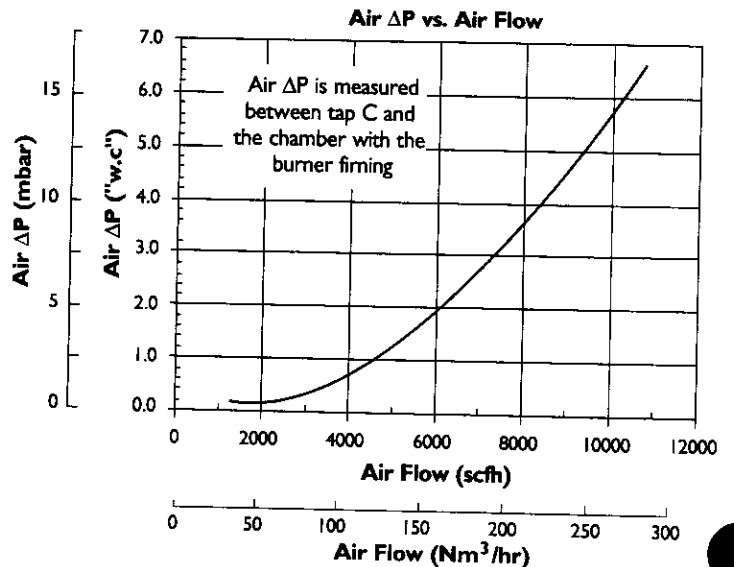
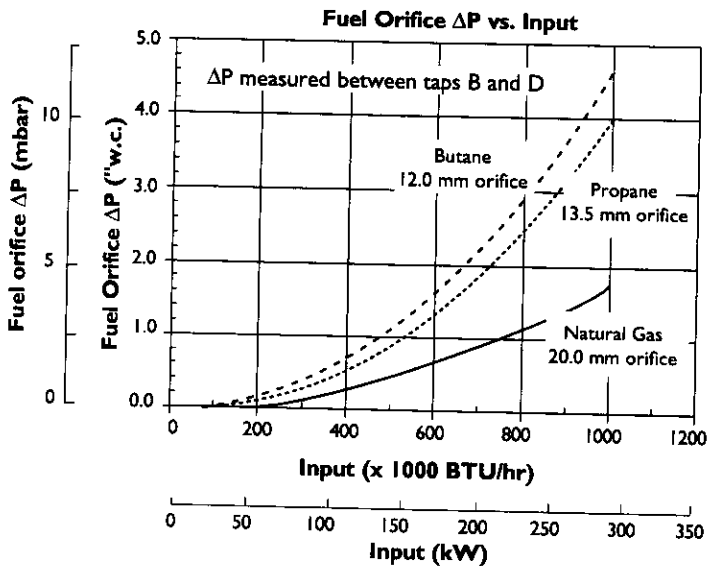
NOx emission data is given for:

- Ambient combustion air ~70 F (20 C)
- Less than 700 F (370 C) firing chamber
- Minimal process air velocity
- Low fire input adjusted to 30,000 BTU/hr (9kW)
- ppm volume dry at 3% O₂
- Neutral chamber pressure

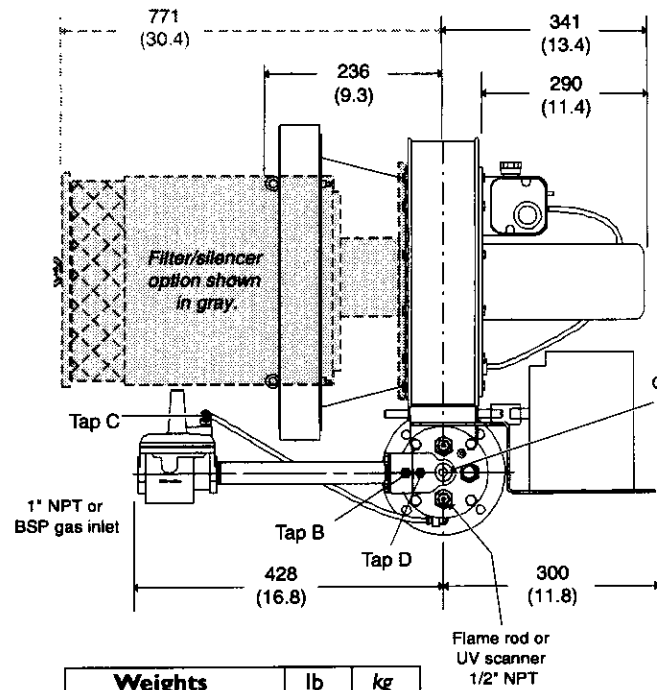
Emissions are influenced by:

- Chamber conditions
- Fuel type
- Firing rate
- Ratio regulator adjustment
- Combustion air temperature

CO emission is largely influenced by chamber conditions. Contact your local Eclipse Combustion representative for an estimate of CO emission on your application.

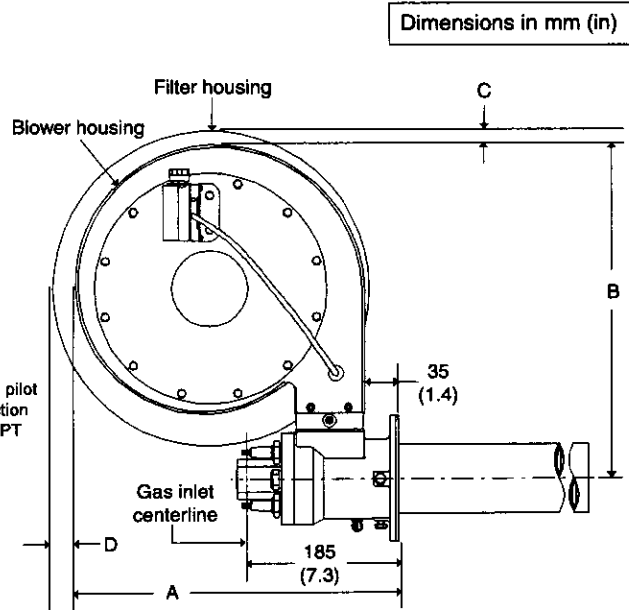


Dimensions-RM100



Weights	lb	kg
Packaged burner	75	35
Filter silencer	41	19

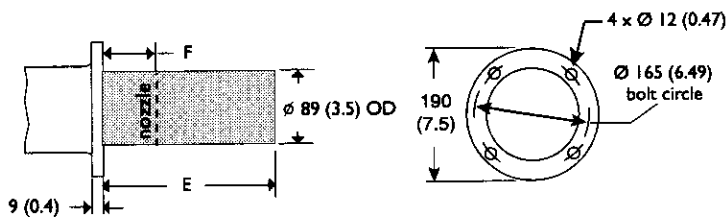
Flame rod or
UV scanner
1/2" NPT



	A	B	C	D
50 Hz	485 (19.1)	530 (20.9)	n/a	n/a
60 Hz	425 (16.7)	475 (18.7)	10 (0.4)	23 (0.9)

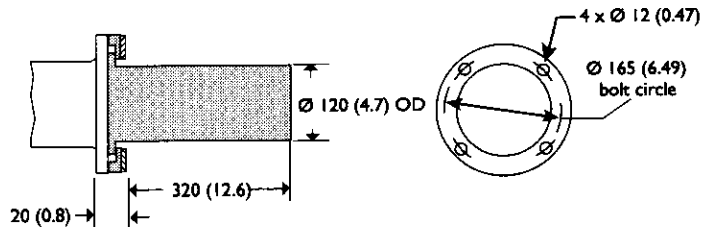
Combustor types

Alloy tube

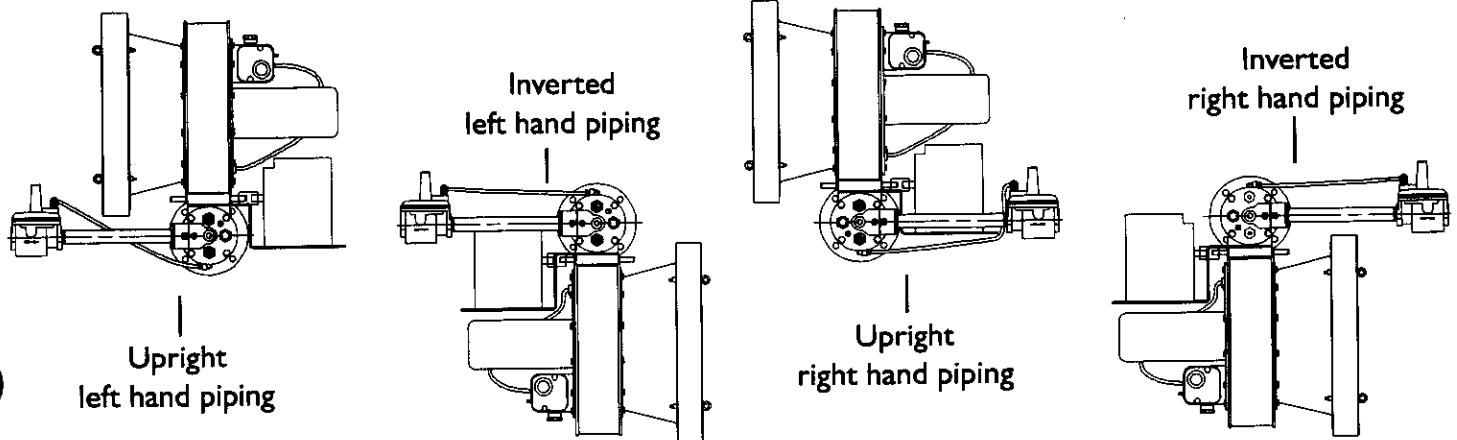


E	F
330 (13.0)	84 (3.3)
406 (16.0)	160 (6.3)

SiC tube



Burner configuration





Offered By:

Power Equipment Company
2011 Williamsburg Road
Richmond, Virginia 23231
Phone (804) 236-3800
Fax (804) 236-3882

www.peconet.com